

High Performance Fittings & Valves

Available Poly-Pipe Fitting Sizes 1/2", 3/4", 1", 1 1/4"
Available Valve Sizes 1", 1 1/4", 1 1/2", 2"



Coupling



Female Elbow



Male Adaptor



Male Elbow



Female Adaptor



Male-Female Strain Relief Union



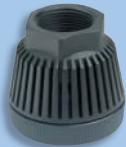
Standard Tee



Poly-Poly Quick Disconnect Union



Female Tee



Foot Valve*



Standard Elbow



Check Valve*

The answer to the Canadian poly pipe market. HANFLO™ fittings are specifically designed and engineered to fit PE 1404 standard grade 75 PSI, standard grade 100 PSI and CSA grade 75 PSI poly pipe.

*These products do not carry CSA approval.

HANFLO™ The Right Choice



- No heating of pipe required
- Corrosion and rust proof
- No screwdrivers required
- No O-Ring
- No crimping
- No solvent cement required
- Non-toxic / Non-metallic
- One piece fitting - nothing to lose
- High quality glass fibre reinforced nylon for strength
- Will not pull apart



ANSI/NSF 61

The HANFLO™ fittings are certified by CSA to CSA standard B137.1 They have also been approved by CSA for potable water under ANSI/NSF 61†. The fittings have been tested for long term pressure tests (1000 hours at 1.5 times the pipe pressure rating) and pipe pull out tests to International Standard Organisation (ISO) requirements.

†CSA Approvals only apply for the use with CSA Approved Series 75 & Series 100 Pipe.



HIGH PERFORMANCE FITTINGS

Hansen Products (NZ) Limited (North America)
Email: info@hanflo.com

www.hanflo.com

HANFLO™

No More Rusty Clamps



ANSI/NSF 61

QUALITY ASSURED

HANFLO 015 1111

HANFLO™

POLY-PIPE FITTINGS

Take the Hassle Out of Connecting Pipe

The long awaited solution from HANFLO™ is the answer to all your poly-pipe connecting needs. The fast-fit connection method makes HANFLO™ fittings a breeze to use. With quality approvals that ensure a strong, reliable, leak free connection, you can rest assured that HANFLO™ fittings are the right choice for your application. No screwdrivers, nut drivers, heating or awkward clamps required!

CUT PIPE



Cut the PE pipe (polyethylene pipe) square with pipe cutters, knife or saw to the required length.

PUSH ON FITTING



Push the HANFLO™ fitting into the pipe, up to the housing of the white circlip.

WIND ON NUT



Wind the nut onto the pipe by hand until tight.

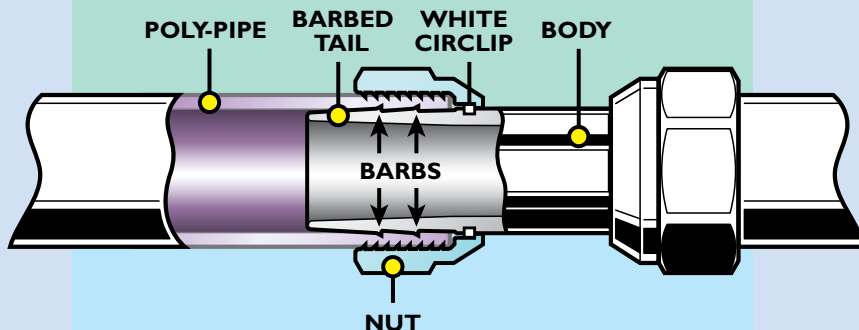
TIGHTEN



Tighten nut with wrench until nut is fully engaged.

How HANFLO™ Fittings Work

- 1 The NUT is pulled back onto the BODY of the HANFLO™ fitting. The BARBED TAIL insert of the fitting is then pushed all the way into the POLY-PIPE, up to the housing of the WHITE CIRCLIP.



- 2 The NUT is then wound back over the top of the POLY-PIPE until it comes to a positive stop against the WHITE CIRCLIP.

- 3 The NUT forces the pipe down onto the barbed tail creating a permanent vice-like grip & high pressure seal.

Common Applications Include

- Well Water Systems
- Lake Water Systems
- Agriculture
- Irrigation
- Sewage & Effluent
- Pressure Systems
- Farm
- Sprinkler Systems
- Green Houses
- Horticulture

A Fitting to Suit Your Application

The HANFLO™ fittings are designed for use with the following pipe:

STANDARD & IRRIGATION (Black Nut)

- CSA Series 75 PSI Poly Pipe
- Standard Grade 100 PSI Poly Pipe
- Standard Grade 75 PSI Poly Pipe

100 FITTING (Green Nut or Green Tag)

- CSA Series 100 PSI Poly Pipe